



CAN YOU CRACK THE CODES?



ATBASH CIPHER

This simple cipher, originally used for the Hebrew alphabet, is just the alphabet backwards.

A=Z B=Y C=X D=W E=V F=U G=T H=S I=R
J=Q K=P L=O M=N N=M O=L P=K Q=J R=I
S=H T=G U=F V=E W=D X=C Y=B Z=A



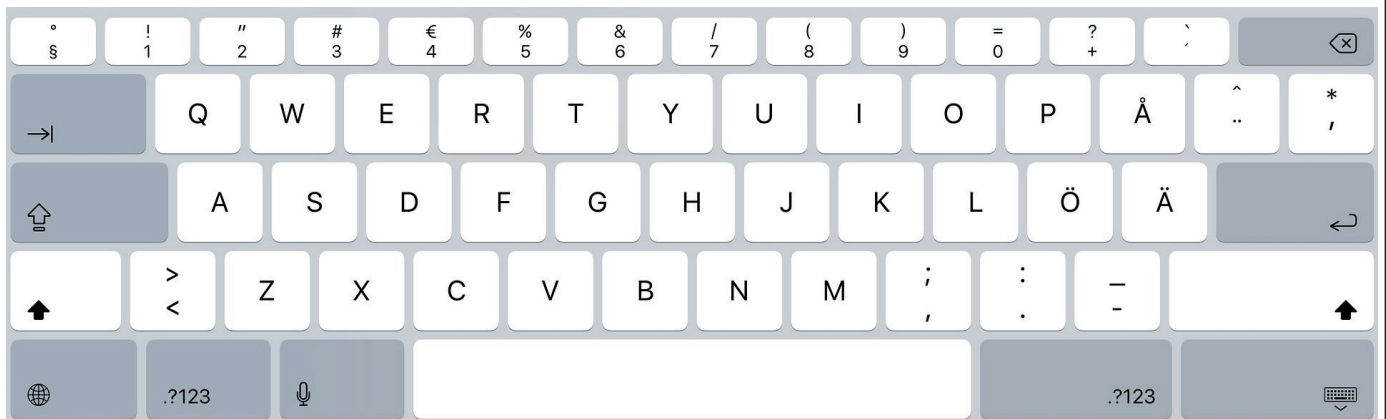
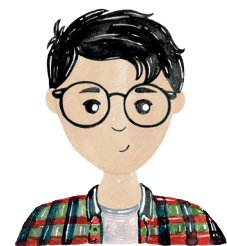
PHONE CIPHER

You need a phone keypad to crack this cipher. The code number consists of the number the letter is on the keypad, plus its position. For example, A is the 1st number on 2, so it would be 2 1.



KEYBOARD CIPHER

This cipher uses a QWERTY keyboard. To decode, just shift one letter to the right. If there isn't a letter to the right, shift in the opposite direction.





CODED MESSAGES



THE FIRST
CODE IS
A SIMPLE
ATBASH
CIPHER. GOOD
LUCK!



R SLKV BLF VMQLB VFIL HKRVH

THIS CODE USES
A PHONE CIPHER!
CAN YOU READ THE
MESSAGE?



91 32 53 63 83 32 73 32 21 31 43 62 41

YOU'LL NEED
A QWERTY
KEYBOARD TO
CRACK THIS
CODE.



WYEI AOUWA AIKCW XKYWA

MY TOP SECRET MESSAGE

HAVE A GO AT
CREATING YOUR OWN
CODED MESSAGES.
ASK A FRIEND TO
TRY AND CRACK THE
CODE!

